

To Your Health

MESSAGE FROM OUR CEO



Last spring, Ocean Beach Hospital and Medical Clinics (OBHMC) asked voters to consider a bond to fund facilities and medical equipment to improve access to local health care. The request failed by five votes.

It's clear that our community sees the value in ensuring rural residents have access to quality health care. That's why our Board of Commissioners placed the measure back on the ballot for the August 1, 2023 Primary Election.

Many people in our rural community still must travel long distances to get the care they need. If approved by voters, the bond will fund improvements to increase the quality of and access to health-care services here at home.

The bond is projected to cost \$0.17 per \$1,000 of assessed property value. The cost would be \$5.67 per month or \$68 per year for the owner of a \$400,000 home. This rate is less than half of what voters approved in the last bond, which was paid off in 2021.

Reports show that rural Americans are at risk for poorer health outcomes. OBHMC is designated a Critical Access Facility for rural residents and works to improve access to health care services locally. **We are not-for-profit and report to our taxpayers.**

Ballots must be postmarked by August 1, 2023 to count. Please learn more about the bond proposal at www.oceanbeachhospital.com/bond. I welcome your comments at (360) 642-6300 or sattridge@oceanbeachhospital.com.



Scot Attridge
OBHMC CEO

THE BOND WILL FUND:

- Adding a nonprofit Urgent Care Clinic
- Renovating hospital patient bathrooms
- Expanding the Ilwaco Clinic, the Wellness and Rehabilitation Center, and the pharmacy
- Increasing access to women's health services at the Ocean Park Clinic
- Acquiring or adding space for specialty services such as orthopedics, dermatology, podiatry, urology, behavioral health, and diabetes care
- Upgrading medical equipment
- Improving delivery of in-home nursing care services

Swing Beds: This Medicare program might benefit you

The Swing-Bed Service is a Medicare program Ocean Beach Hospital (OBH) and other critical access hospitals provide. It allows a qualified patient to transition from acute care at the hospital to Medicare skilled service care, while remaining in the same room at OBH. It also accommodates a patient transferring to a swing bed at OBH after being discharged from acute care at another hospital.

Key benefits of the Swing-Bed Service:

- Assists in transitioning from an acute care stay to returning home
- Offers ease of treatment including, for instance, ongoing physical therapy
- Allows time to regain strength and maximize rehabilitation potential

During a patient's swing-bed stay, a weekly multi-disciplinary care conference is convened with the patient, family members, care providers, therapists, and a discharge planner, which focuses on treatment and activity goals for a smooth transition.

As a Medicare program, patients must meet certain Medicare criteria to be considered for the Swing Bed Program. **The two main criteria for admission to the program are as follows:**

1. The patient has spent three consecutive nights (measured by midnights) in acute care at OBH or at another hospital recovering, for instance, from surgery, a fall, a heart attack, or a stroke.
2. The patient requires additional medical support (skilled-care needs such as physical therapy or intravenous medication that cannot be provided at home or on an outpatient basis) and would benefit from further treatment and/or rehabilitation in a hospital setting.

Medicare covers the service for 21 days, after which time there is a copay. Those not covered by Medicare should consult individual health insurance plans regarding any possible coverage.

For more information on the Swing-Bed Program, please visit **www.oceanbeachhospital.com** or scan the QR code to the right.



Consider this example: A patient had a fall and is weak due to chemotherapy. The patient is admitted to Ocean Beach Hospital and, after three nights, the hospitalist determines the patient would benefit from physical and

occupational therapy to help the patient become stronger before returning home. The patient meets Medicare criteria and stays an additional 14 days at the hospital to receive therapy six days a week.

Employee of the Quarter



Congratulations!

Q1 2023

ANNETTE ALLEN
Environmental Services
Manager



IN THE NEWS

Ocean Beach Medical Group's Naselle Clinic marks 2nd anniversary in its new location this September

The Naselle Clinic welcomed its first patients to the new location on Sept. 27, 2021.

OBHMC, at that time, invested over \$611,000 to repurpose the Bank of Pacific building into a modern medical clinic to better serve Naselle, Chinook, and other neighboring communities. The Naselle Clinic, as well as the ones in Ilwaco and Ocean Park, are especially important in providing medical services to those who don't have the option of crossing the bridge or traveling long distances for their health-care needs.

Lori Sharrow, FNP, is the provider at the clinic. She is assisted by Tim Larson, LPN, and Jolene Genn, receptionist.

Since its opening, the clinic has added full lab services on Wednesday mornings, a courier service for labs taken by Lori and Tim on other days, and an onsite dietician, Andy Lakanen. It also offers a monthly caregiver support group at the Naselle Library.

The well-organized space includes two examination rooms, a procedure room for suturing and walk-in care, and a dedicated blood-draw room, as well as reception and office areas and ADA-compliant bathrooms.

“Our patients love the new clinic as it is both convenient and personable,” said Sharrow. “We treat our patients like family as this is a close-knit community, and people take care of each other.”

Mark Your Calendar

POLST & ADVANCE DIRECTIVE WORKSHOP

Aug. 4, 10AM to 11:30AM, Naselle Public Library Community Room, and 2:30 to 4PM, Ocean Park Fire Station

Learn from legal and medical professionals why planning and having a Physician Order for Life Sustaining Treatment (POLST) and Advance Directive are important and the steps you can take to be prepared. Main speaker for the workshop is Dr. Laurie Belknap.

COMMUNITY HEALTH & WELLNESS FAIR

Sept. 30, 9AM to 2PM, Ocean Beach Hospital

Join OBHMC staff and other health and wellness representatives in the community for this fun and informative event, which includes free health screenings, free health education, information on community resources, and fun activities for children.

OBHMC welcomes two new providers

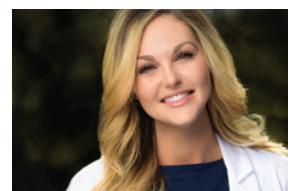
OBHMC is happy to welcome April McCune, PA-C and Anya Holmquist, ARNP.

April specializes in family medicine and is accepting new patients at the Ocean Park Clinic.



April McCune, PA-C

Anya's specialty is emergency medicine and family medicine; she is seeing patients in Ilwaco at the Walk-In Clinic.



Anya Holmquist, ARNP

OBHMC Locations & Hours

OCEAN BEACH HOSPITAL

174 1st Avenue N
Ilwaco, WA 98624
360-642-3181
Open 24 hours

Lab Hours

Monday - Friday
7:00 am - 6:30 pm
Saturday
8:00 am - 4:30 pm
Closed Sunday and Holidays

MEDICAL GROUP ILWACO

176 1st Avenue N
Ilwaco, WA 98624
360-642-3747

Clinic Hours

Monday - Saturday
8:00 a.m. to 5:00 p.m.

MEDICAL GROUP - OCEAN PARK

1501 Bay Avenue, Suite 201
Ocean Park, WA 98640
360-642-6387

MEDICAL GROUP - OCEAN PARK (CONT.)

Clinic Hours

Monday - Friday
8:00 a.m. to 6:00 p.m.

Lab Hours

Monday - Tuesday
Thursday - Friday
8:00 a.m. to 4:00 p.m.
Closed Wednesday, Saturday,
Sunday and Holidays

MEDICAL GROUP - NASELLE

309 Knappton Road
Naselle, WA 98638
360-484-7161

Clinic Hours

Tuesday - Friday
8:00 a.m. to 6:00 p.m.

Lab Hours

Wednesday
Scheduled Patients Only

WELLNESS AND REHABILITATION CENTER

316 1st Avenue N
Ilwaco, WA 98624
360-642-6328
Fax 360-642-3784

Clinic Hours

Monday - Friday
8:00 a.m. to 6:30 p.m.

Wellness & Rehabilitation Hospital Hours

9:00 a.m. to 5:30 p.m.




360.642.3181

customer.service@oceanbeachhospital.com

www.oceanbeachhospital.com



 Follow Us on Instagram

 Find Us on Facebook

IN CASE OF EMERGENCY, DIAL 911